

**2 Rosella Grove Bidwill NSW**

3  1  1 

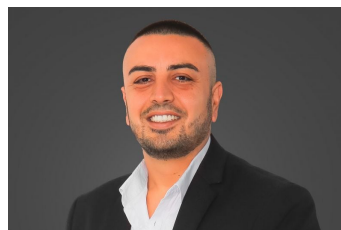
**WHAT A RESULT!!**

Situated on a lovely cul-de-sac and at a very attractive entry level price to the market be sure to contact Sky Property for a friendly chat, the property consists of the following.

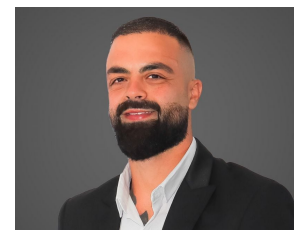
- Very wide frontage with carport and side access to rear yard
- 3 bedrooms
- Combined living and dining areas flowing to the outdoors
- Laundry with direct access to yard
- Neat and tidy kitchen
- Air-conditioning
- Large back yard
- Drive through access
- Block size of 559m2

**Land Size** : 559 sqm

**View** : <https://www.skyproperty.com.au/sale/nsw/western-sydney/bidwill/residential/house/5713606>



**Riza Kamerakkas**  
0402 352 123



**Fayez Abdo**  
0410044566